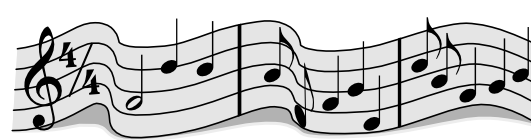


**EWHS Music Booster  
Pledge Drive Form**  
*(RETURN this portion)*



**Tax Deductible  
Donation Receipt**

*(KEEP this portion for your records)*

Donation to:

EWHS Music Booster Club  
Edmonds-Woodway High School  
7600 212th Street S.W.  
Edmonds, WA 98026

Tax ID # 91-1226385

EWHS Music Booster's  
Annual Pledge Drive

Donation Amount \$ \_\_\_\_\_

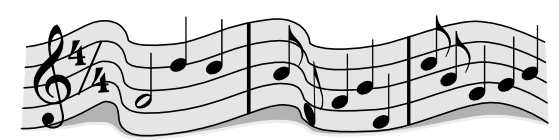
Date: \_\_\_\_\_

Check # \_\_\_\_\_

\_\_\_\_\_  
(your signature)

Questions??? Contact Music Boosters through the  
website [www.ewhsmusic.com](http://www.ewhsmusic.com)

Due to families with multiple music students or  
students in multiple music classes you may  
mistakenly receive more than one of these forms and  
we apologize.



**EWHS  
Music Booster's  
Annual  
Pledge Drive**



" I see my life in terms of music"  
-Albert Einstein

DONATION Amount \$ \_\_\_\_\_

Your Name or Organization:

\_\_\_\_\_  
Address

\_\_\_\_\_  
Phone: (\_\_\_\_) \_\_\_\_\_

Which Music Teacher does your  
student work with? Mr. Bergevin  
Ms. Colson  
Ms. Thomson

Please make check payable to :

***EWHS Music Boosters***

Return this form & your check  
in the enclosed envelope.

***Thank You for Your Support!!!!***



## EWHS Music Booster Pledge Drive

The EWHS Music Department is recognized for excellence. Our students are fortunate to have a variety of Educational Music opportunities including: Orchestra, Choral Groups, Jazz, Symphonic, Concert, and Pep Band. This level of excellence requires the commitment of students, teachers, parents, and administrators.

The Music Booster Club continues their commitment to the EWHS Music Program and all of our talented students through volunteer services and fundraising events. The Annual EWHS Music Booster Pledge Drive is one of our main fundraisers for the year. It is better known as the No Hassle Fundraiser! It's easy, quick, voluntary and every student in the music department will benefit from the proceeds in some way.

With continued State & Local budget cuts, fundraising support from parents & the community is critical. Our greatest challenge involves the cost of big ticket items such as uniforms, equipment repair, instruments and music materials. We are hoping that over time this pledge drive will help bridge the gap and provide continued support for the EWHS Music Program & our Student Musicians & Singers.

***Our goal is to raise \$5,000 this year.***



## The Importance of Music Education

### Research supports a positive link between Music Education and...

#### \*Higher SAT scores: verbal & math sections.

*(Profiles of SAT & Achievement Test Takers, The College Board, 2001)*

#### \*Higher Academic Achievement in math, science, reading, history & geography.

*(Neurology Research, Feb 28, 1997; U of S study by Jeffrey Kluball, 2000; Dr. James Catterall, UCLA, 1997)*

#### \*Enhanced sensory integration, attentional, cognitive, emotional & motor skills.

#### \*Appreciation of diversity in the Arts & Culture.

*(Arts with the Brain in Mind, Eric Jensen, 2001)*

#### \*Positive self-esteem, discipline & motivation.

#### \*Social skills, cooperation & teamwork.

*(MENC's Benefits of Music Brochure, 2003)*

#### \*Greater resistance to drug & alcohol use.

*(Texas Comm. on Drug & Alcohol Abuse Report, 1998)*



## How Can You Help?

*Make your donation now!!!*

For **PRIVACY** purposes, individual donations will not be displayed. These donations are **TAX DEDUCTIBLE**. Your participation is **OPTIONAL**. Feel free to make copies of the pledge form and encourage your family, friends, and local businesses to make pledges. Any local business that donates will be publicly recognized in the Music Booster section of the Crier Newsletter in the coming months.

Please Make Checks Payable to:

***EWHS Music Boosters***

Fill out the Music Booster Pledge Form on the back and return the form and your check in the enclosed envelope.

Please send in donations ASAP. The website & Crier will be updated regularly so you can see our running total during the year.

Thank You for Your Support!

EWHS Music Booster Club